

CREATE A PIZZA OVEN

YOU WILL NEED:

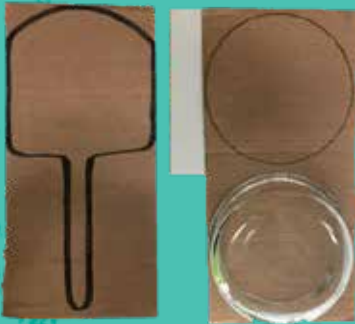
1 Lg Cardboard Box · 1 Sm Cardboard Box · Markers · Glue · Scissors · Printable Pizza Templates

1



- Place the small box in front of the large box. Draw a line tracing the top of the small box; then, add an arch above it.
- Cut the arch ONLY (leave the straight line intact). Push the flap in to create an opening & slide the small box inside to support the flap.
- Cut the bottom flaps off of the large box; save to use for additional accessories.

2



- Next, use the box flaps to create the oven paddle and pizza crusts. Sketch a paddle on 1 flap. On another, take a round item and trace it to make 2 pizza crusts. Then, cut them out.

3



- Print out several brick pattern sheets & glue them together to fit your box front. Cut an arch into the pattern & fold it on top of the flap. Then, color the bricks.

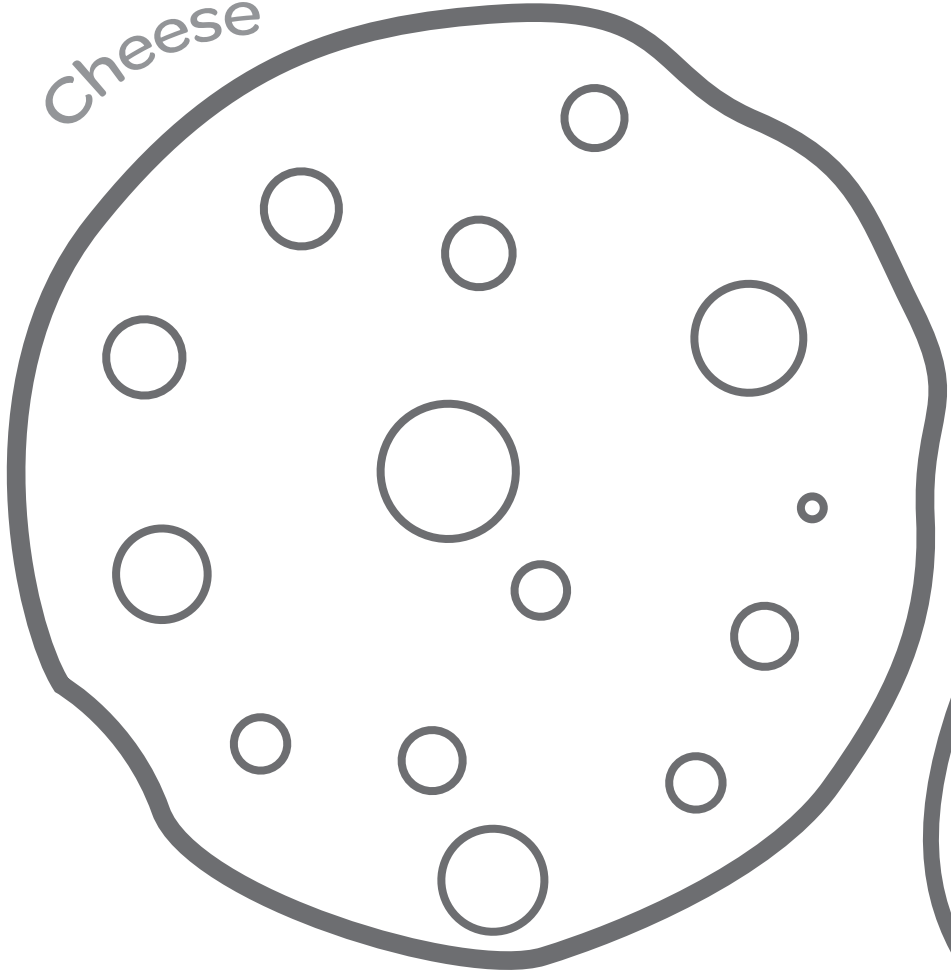
4



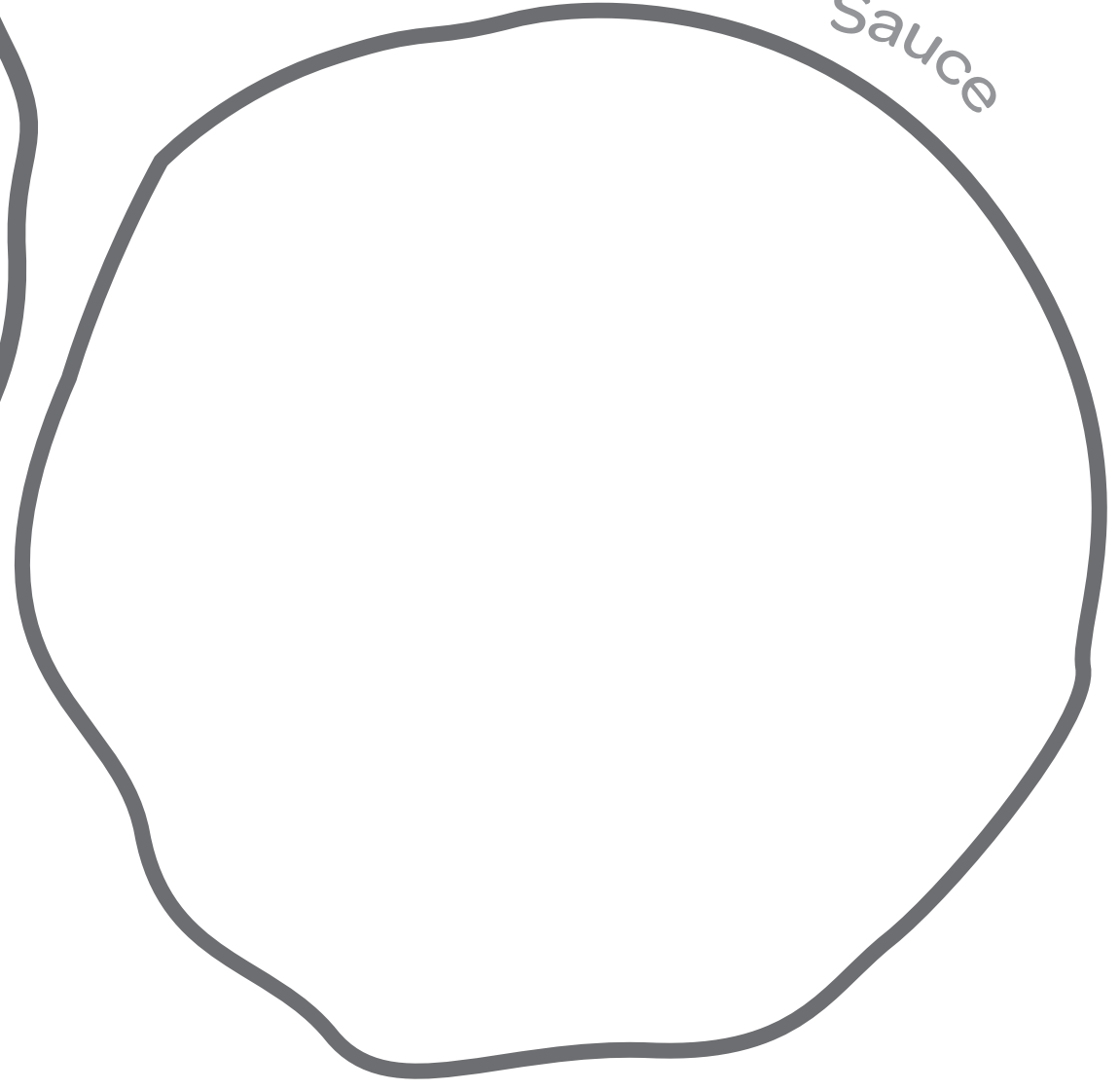
- Color & cut out your accessories such as pizza sauce, cheese & toppings. Then, fill out your menu!

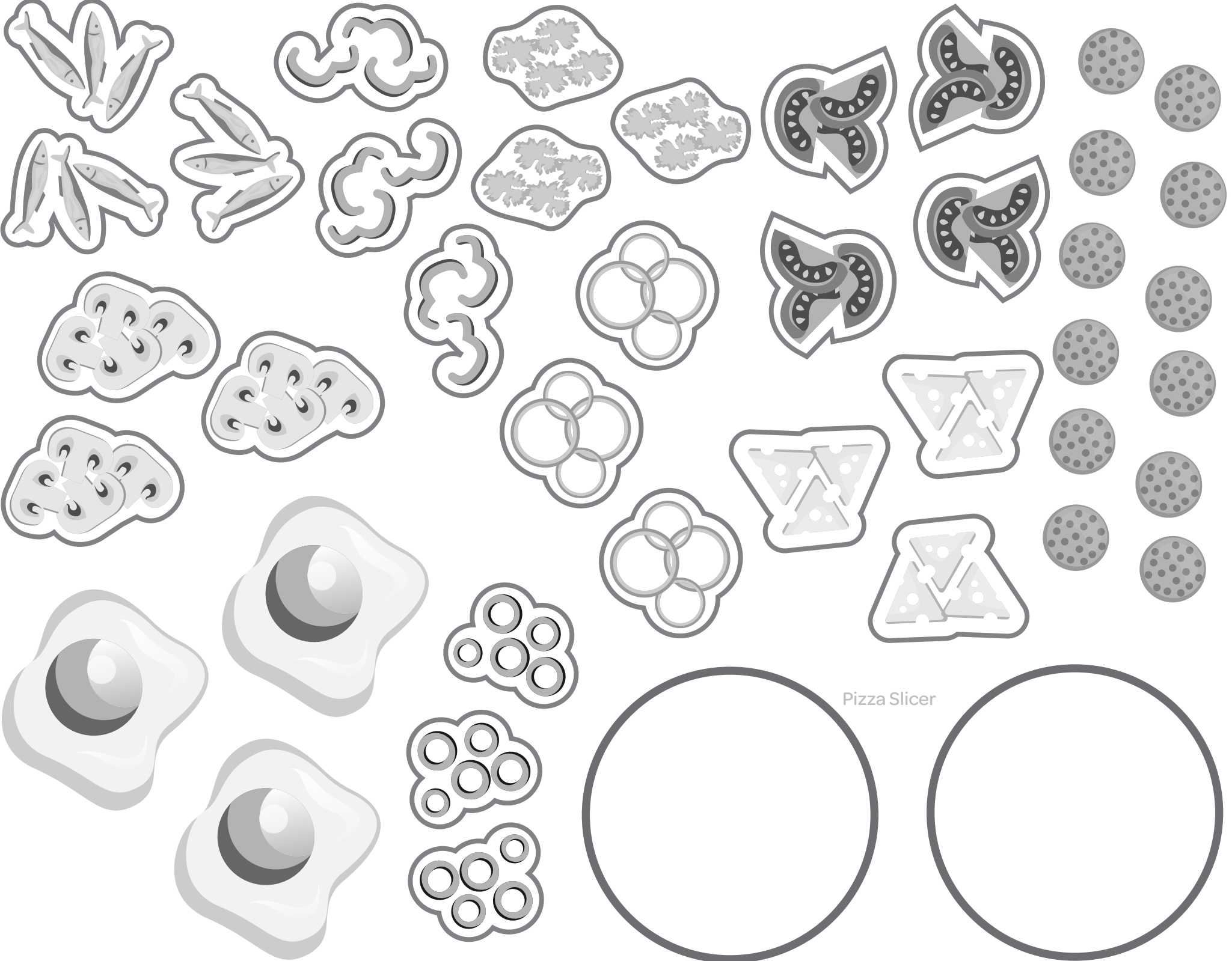


Cheese

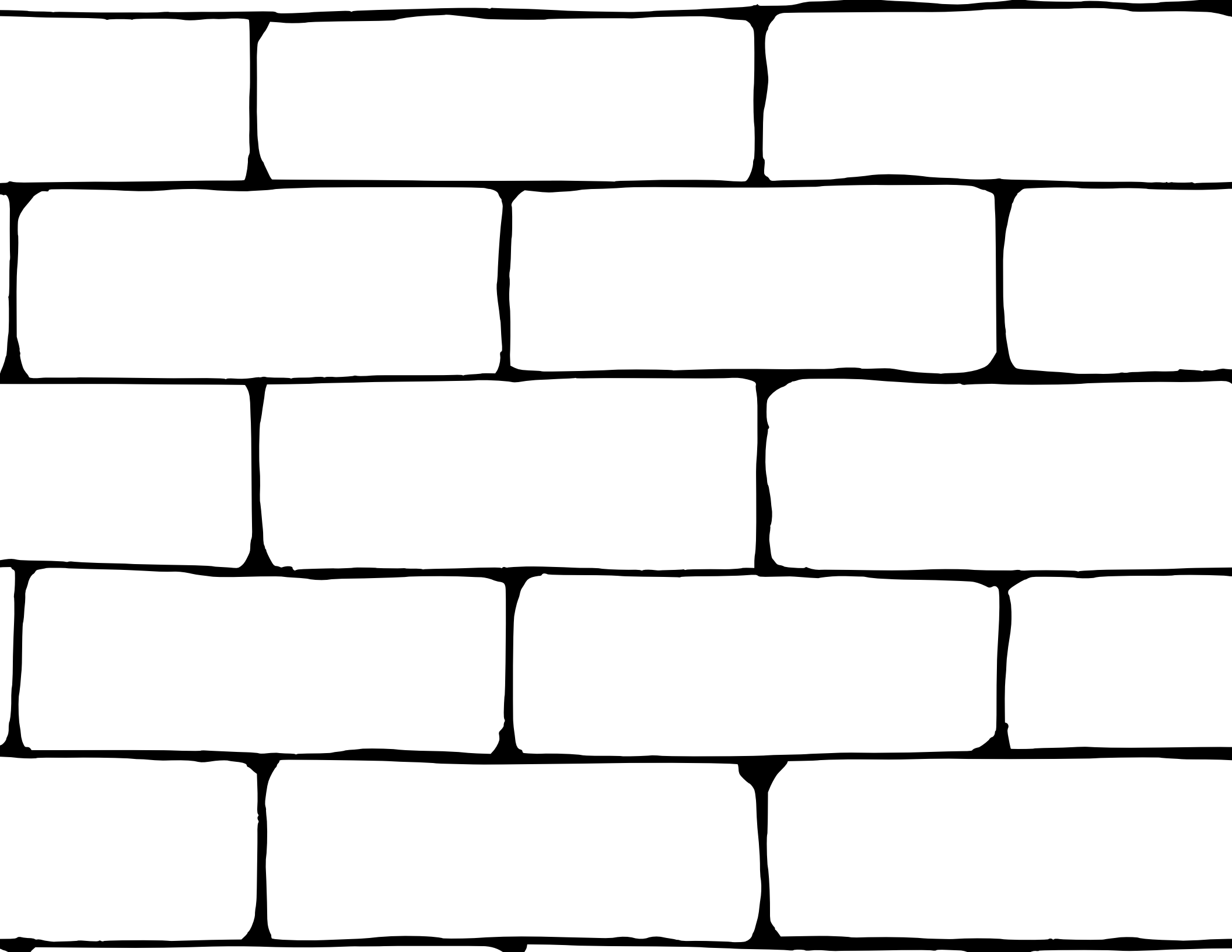


Sauce





Pizza Slicer



PIZZA

MARGARITA

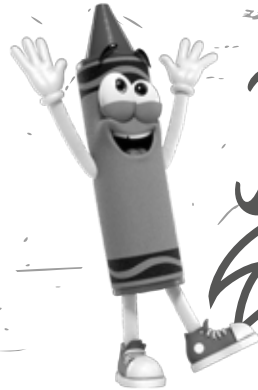
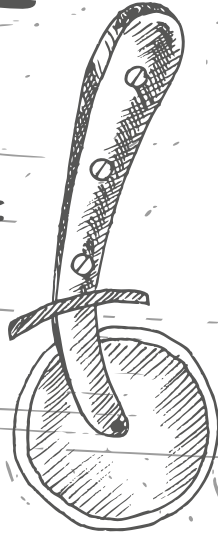
\$

PEPPERONI

\$

VEGETARIAN

\$



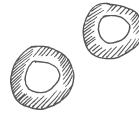
It's time
FOR PIZZA

CREATE YOUR OWN

CHOOSE TOPPINGS



FRESH TOMATO
MUSHROOMS



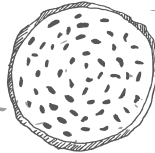
OLIVES



CHEESE



PEPPERONI



RESTAURANT